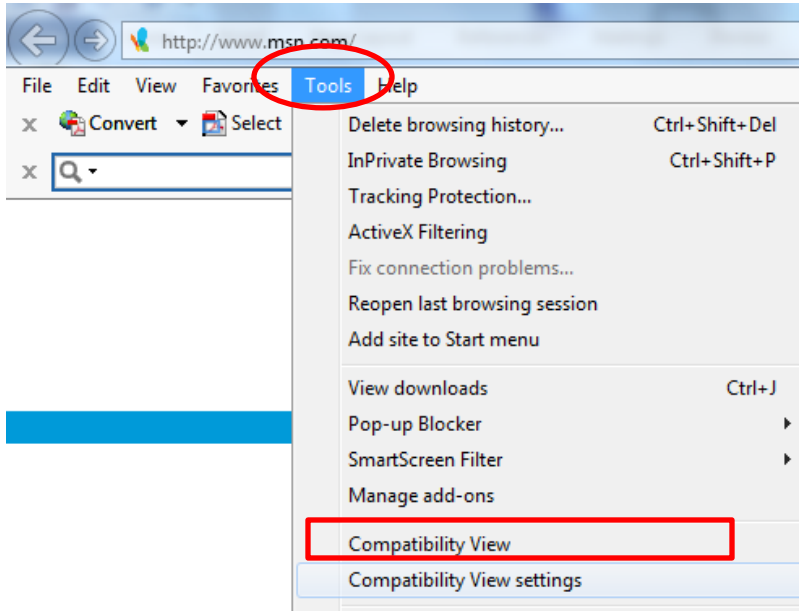


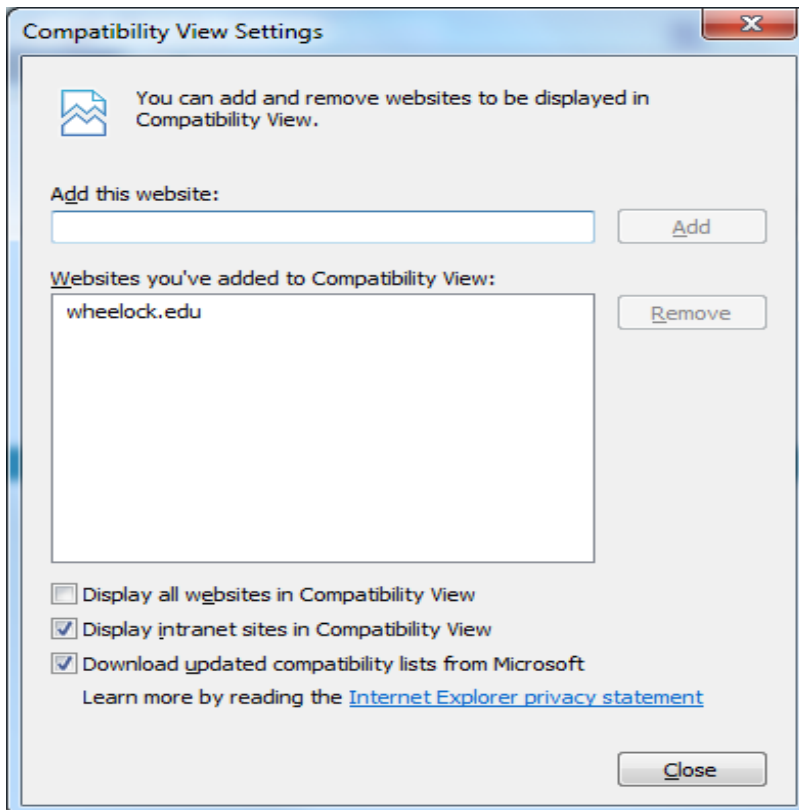
## How to enable compatibility mode in Internet Explorer 10 for Wheelock Portal

In order for selection of links and drop down box data to work correctly in Internet Explorer (IE)10 on Windows 7 or 8, IE 10 must be set to compatibility mode. If compatibility mode is not enabled, selection of data or clicks on links will result in the progress wheel spinning but you will never be taken to the link location.

1. Open **Internet Explorer 10** and press the Alt key (to left of spacebar). This will display the menu bar at the top of the screen just below the address bar.
2. Click on **Tools**, then select **Compatibility View Settings**



3. In the **Add this website box**, type **wheelock.edu** and click the **add button** to the right.



4. Click the **Close** button